



DEFENCE CATALOGUE

BALU FORGE INDUSTRIES LIMITED

INTRODUCTION:

The Indian government has given great impetus to domestic factories to take part in defence production. A large part of the procurement program has also moved to the private sector with a considerable investment made by the Indian industry to support the Indian defence production.

The government has also in 2020 barred a majority of import procurement by the defence companies giving a further rise to home grown companies actively participating in the Indian defence sector. There has been a strong focus at Balu forge towards readiness for the needs of India as well as Global Defence Organizations. Balu forge is already an approved vendor to a majority of the 41 ordinance factories in India.

A large part of the capital investment for the next 10 years is towards Defence production with also key Joint ventures/ Technology partnerships in the pipeline. The key areas planned in the coming years are Artillery, undercarriage parts for Armored vehicles, weapons & Ammunition for light & Heavy Infantry and forged & Machined components for the Engine Division.

Balu Forge has also secured & successfully supplied for over 5 years to Defence forces in two prominent European Countries and executed supply as a single source to these nations. There will continue to be a strong focus on further expanding the reach & customer base amongst more defence organization globally.



KEY MANAGEMENT PERSONNEL

The Strong Lineage of the company spreads over three generations & the growth story has been consistent since its inception in 1989. The company has consistently built a formidable reputation & strong global presence. The company's reputation now resonates with precision & quality engineering delivering success for all its stakeholders spread over 80 Countries.



Jaspal Singh Chandock, Managing Director

A Mumbai based & 2nd generation entrepreneur with decades of experience & investments in a vast sphere of industries. The Foundation for Balu was laid by Mr. Jaspal Singh Chandock under the guidance of late Mr. Prehlad Singh Chandock & the company has risen to new heights with a consistent year on year growth. The manufacturing of engine components has always been core to the vision for Mr. Jaspal Singh & a presence in over 80 countries has led to the establishment of global brand strong in its values & integrity.



Trimaan Singh Chandock, Executive Director

A young & dynamic leader with a MSc & a BSc in Management studied from H.R College, Mumbai. A 3rd generation entrepreneur who joined the company in 2009. A visionary with a keen interest in innovation in the field of manufacturing. The company has had incremental innovation in the core of its practices since the joining of Mr. Trimaan Chandock. The introduction of the same led to greater productivity, flexibility & speed in the manufacturing plants. The shift to the OEM business had been undertaken after the achievement of the TS16949 status under the leadership of Mr. Trimaan Chandock.



Jaikaran Singh Chandock, Director

The youngest & newest recruit who joined the business in 2014 after completion of BSc in Business Management from Cass Business School, London & MSc in Strategic Marketing from Imperial College, London. He has had Previous experience in MNCs such as Reeves & Njoy E-cigs & a notable achievement at the college level was that he was crowned the winner of an Entrepreneurship challenge amongst 50,000 participants. As entrepreneurship runs in the family, the recent addition has led to application of new technology in the company & further diversification into manufacturing of different engine parts from the diesel engine family. The recent setup of the R&D facility under his vision has set a base & laid the path of the company for the future.

RESEARCH & DEVELOPMENT

Development of New Materials

A number of new material chemistries have been worked on during the many R&D Projects to assess the material compositions & applications of newer metals. The New Energy Era has led to a number of opportunities & rise to newer applications of conventional metals with innovative manufacturing processes.

A number of key areas of R&D are as follow:

- Fatigue Analysis of Steels (Stainless steel alloys, Aluminium, Titanium, etc)
- Durability & Analysis of Failure (Root Cause Analysis, etc)
- New Raw Material Selection & Process Development
- Selection of Raw Material
- Modelling and simulation of Heat Treatment Processes

State of the Art Machining

The Machining Facilities are well supported with State-of-the-Art Infrastructure namely:

- Comprehensive In-House Tool Room
- Metallurgical Labs
- Design & Process Facilities
- Inspection & Tests Facilities

The R&D complements the above excellence by further enhancing the existing capability of our company. The Three Key Pillars that are now possible in the R&D Center:

New Product & Process Development

Development of New Material Chemistries for the New Energy Era | Gear Manufacturing | Assembly Services & Testing

Technology Enhancement

Ultrasonic Machining | High Speed Grinding | 4-Axis & 5-Axis Machining | Rapid Prototyping

Analysis

Tool Wear Analysis | Fracture Analysis | Grain Deformation | Force & Temp | Durability & Fatigue | Cost Saving

Product Engineering & New Product Development

Advanced & Additive Manufacturing

We use a number of additive manufacturing methodologies for rapid prototyping & New Product Development. This ensures flexibility & Speed in the New Product Development process & ensures a rapid development of New Prototypes. The Use of 3D Scanning also adds efficiency & speeds up the entire design & development Process. The In-House Infrastructure for 3D Scanning can measure up to 5 Million Points in 2 Seconds & 7-20pm Accuracy.

The Additive Manufacturing Centre also formulates a good foundation for our company's foray in the Aerospace Industry with a large product portfolio that now is possible by the Additive Manufacturing Methodology. 3D printing also is a key area as part of our In-House Tool Room Strategy as key components from the Manufacturing Process can now be produced In-House in the 3D Printing Center

Forging the Future

All our facilities are being powered by Renewable Energy Sources as part of our strategy to drastically reduce our carbon footprint.

There is a continuous focus in the below areas:

- Design and Development of new products and processes.
- Modelling and Simulation of Metal Forming processes.
- Deformation studies and associated metallurgical analysis of Alloys.
- Process improvements/ Cost optimization in Metal Forming Process.
- Product life assessment through Fatigue & Fracture studies.

A key focus is Aluminium as part of the light metals that have seen a surge in demand in the New Energy Vehicles.



We have been accredited with ISO 9001 certifications for more than a decade for continuous manufacturing excellence.

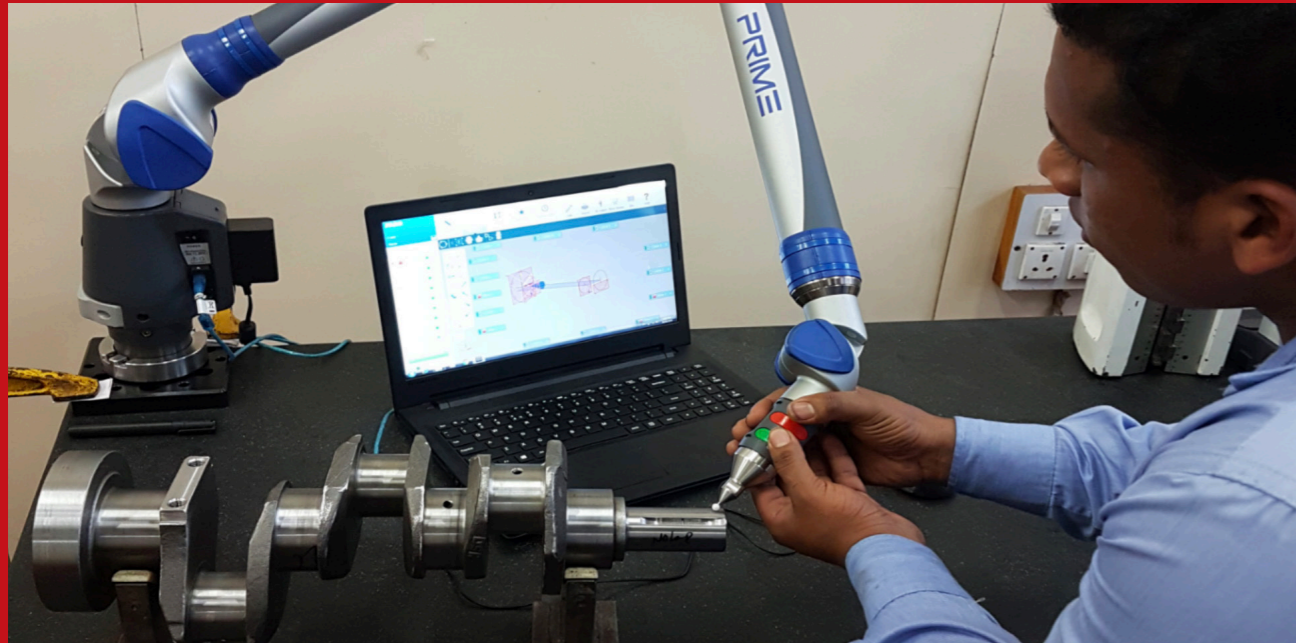
We have been a IATF 16949:2016 accredited company for almost a decade for offering Precision Engineering Solutions of the Highest Standards to our customers.

We have been accredited with the ISO 14001:2015 (Environmental Management System) certification in the year 2020 owing to continuous effort & commitment to an Environmental Conscious Culture at the company. We have targeted to be a Carbon Neutral company by the year 2030 & the steps towards that goal have been initiated from 2020. A large emphasis has been put on Wind & Solar Energy amongst other renewable sources. A Blueprint has also been laid out for our very own Solar Farm to fulfill the needs of our Manufacturing Plants.

We take our management systems for occupational health and safety (OH&S) very seriously at our company. The members of our team are truly our biggest assets & to inculcate a culture for their Health & Safety is our biggest priority. We were accredited with the said certification in 2020 which is a proof of our strong emphasis on the wellbeing every member of the Balu Family proving a very safe & healthy working culture & environment.

CORE COMPETENCY

UNIFYING THE CAPABILITY OF THE ORGANIZATION



The Core Competencies which distinguish us from our competitors & the pillars which have ensured the building of a strong brand worldwide are as below:

- Complete CNC manufacturing capability
- Over three decades of experience in Precision Engineering
- Diversified Product Portfolio & Applications
- Supplier of choice for OEMs
- State of the Art Manufacturing set up
- In-house tool room
- In-house Metallurgical lab
- Dedicated R&D Facility
- Strong Emphasis on New Energy Vehicles & Components
- All machining & forging operations in-house
- Well established brand worldwide

Fully Integrated Plant providing full supply capability to its Geographically dispersed customers from concept to Product design, engineering, manufacturing, testing & validations, Highly skilled workforce with a technologically advanced plant

In-house capability to manufacture a product from 2 Kgs to 500 Kgs & upto 3 meters long

Supply base comprising over 25 OEMs both in India & overseas

Aftermarket customer & distributor base in over 86 countries



Billet Cutting



Forging Press (4000T/8000T)



Trimming Press



Forging Hammer (16T)



Heat Treatment



Heat Treatment



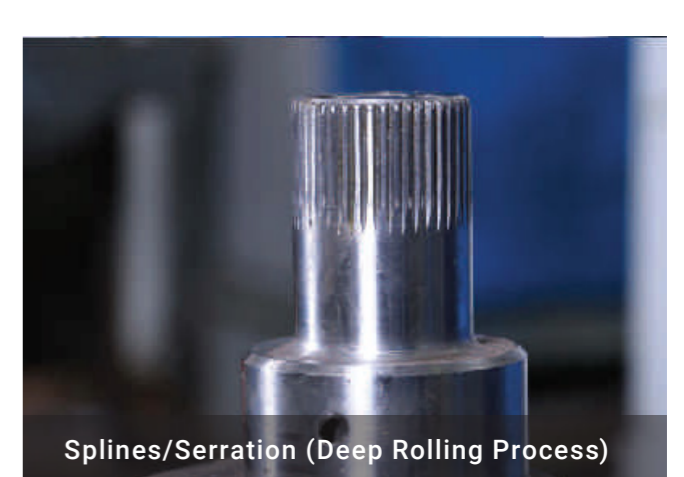
Stress Relieving



Super Finishing



Quality Control - Metallurgical Lab



Splines/Serration (Deep Rolling Process)



Tool Room & Die Manufacturing



Raw Material



Vertical Turret Lathes



Tool Room & Die Manufacturing



Crack Testing



Grinding



Quality Control - Inspection



Quality Control - In-Process Inspection



Grinding



Heat Treatment



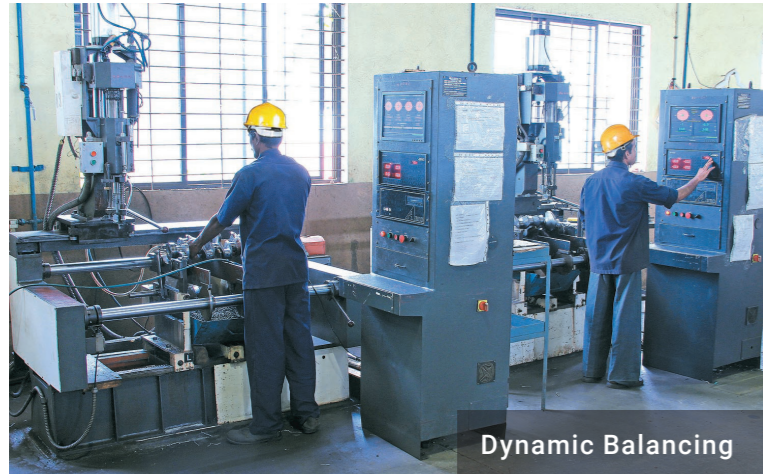
Heat Treatment



Grinding



Heat Treatment



Dynamic Balancing



Milling & Turning



Milling & Turning



In-House Tool Room



Splines/Serration (Deep Rolling Process)



Rough Machining Overview



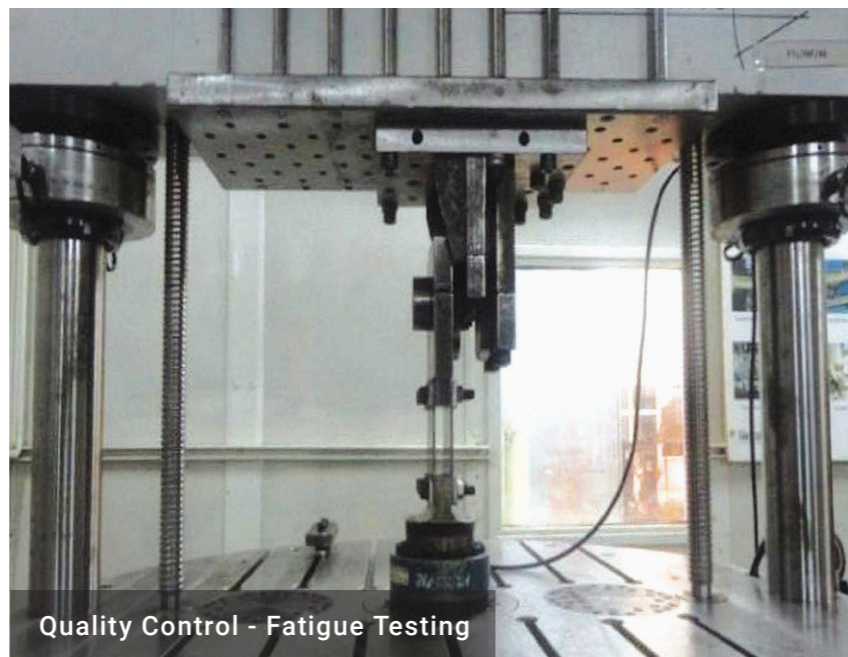
Finish Machining Overview



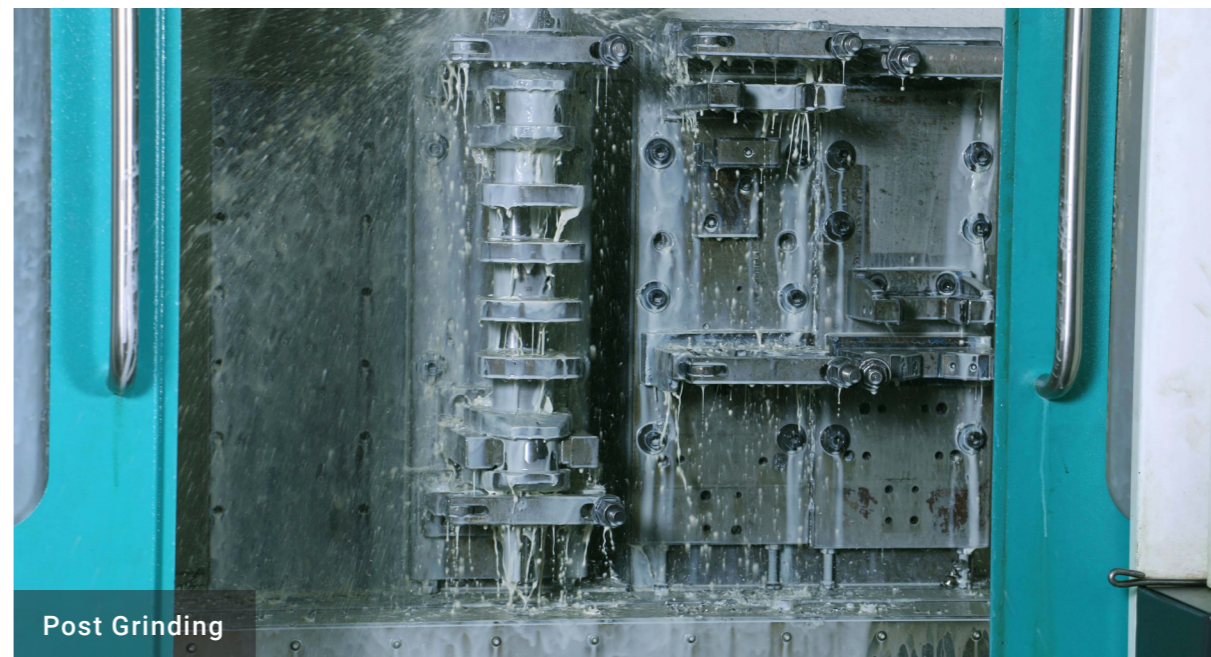
Post Grinding



Finish Machining Overview



Quality Control - Fatigue Testing



Post Grinding



Quality Control - Metallurgical Lab

HISTORY

HOW WE STARTED BALU

We had a humble beginning in the year 1989 in Belgaum, India. The initial set up was for manufacturing of crankshafts for single cylinder & two cylinder with a limited workforce. Within the last decade the company is supplying to over 25 OEM companies and the aftermarket presence has since expanded to over 80 countries. In 1989, we were the first company in India to mass-produce Crankshafts suitable for Tractor, Trucks and Passenger car applications. Two decades later we have gained an excellent reputation in the world market with over 4 manufacturing facilities. The modern era of Balu upholds the reputation of durability by manufacturing Crankshafts only out of Forgings & precision components conforming to the New Emission Regulations & Mobility / Energy Space.

1989

The foundation of 'Balu' was laid by Mr. Prehlad Singh Chandock

1995

First component exported to an overseas market

2010

Acquisition & Installation of the Thyssenkrupp Plant from L'horme, France

2012

Got accredited with ISO/TS16949:2009 accreditation from world renowned company TUV NORD

2017

Became a supplier of Choice to over 25 OEs spread over 5 Continents

2020

Got Accredited with the 14001:2015 & ISO 45001:2018 Certifications. We became an approved vendor to the Ordnance Factory Board (41 factories) & established a specialized manufacturing unit for the Defense Industry

1991

First component manufactured in our factory

2006

Acquisition & Installation of the Ursus Manufacturing Plant from Ursus, Poland

2011

The company successfully achieved the milestone of building a presence in over 80 countries worldwide

2014

Achieved manufacturing of 1000 crankshafts in a single day

2018

Initiated operations at the newly acquired Forging Factory & Laid the foundation to establish a new 25 Acre factory in Belgaum, Karnataka. This was also the year we laid the foundation for Naya Energy Works, a wholly owned subsidiary with a focus on New Energy & New Mobility Solutions

2020/2021

We completed the transition & listing on the Stock Exchange. The Constitution of the company was changed to a Public Limited Company. As part of the new expansion plan, we laid the foundation for the new Tractor project in the region of Africa



PRODUCT LIST

Weight Range: 1-300kgs. Supply Capability:
Forged, Semi finished, Fully machined and Assembled



ORDNANCE FACTORY BOARD

MINISTRY OF DEFENCE, GOI

Sr No.	Product name	Nomenclature/Drawing No.	Factory Unit
1	Extractor lower	2A260281[63]	Ordnance Factory Kanpur
2	Extractor upper	2A260280[63]	Ordnance Factory Kanpur
3	TA LINK	(6120100128)[61]	Ordnance Factory Muradnagar
4	TA GUIDE	(6120100129)[61]	Ordnance Factory Muradnagar
5	TA CLAMP	(6120100130)[61]	Ordnance Factory Muradnagar
6	TA SHOE	(6120100131)[61]	Ordnance Factory Muradnagar
7	BRACKET	3901010022[39]	Heavy Vehicle Factory
8	STRAP	3901011038[39]	Heavy Vehicle Factory
9	COVER PLATE	3901011042[39]	Heavy Vehicle Factory
10	LOCK	3901011069[39]	Heavy Vehicle Factory
11	HANDLE	3901011072[39]	Heavy Vehicle Factory
12	HANDLE	3901011073[39]	Heavy Vehicle Factory
13	COLLAR	3901021110[39]	Heavy Vehicle Factory
14	THRUST	3901023024[39]	Heavy Vehicle Factory
15	BUSHING	3901023030[39]	Heavy Vehicle Factory
16	GEAR	3901023059[39]	Heavy Vehicle Factory
17	GEAR	3901023081[39]	Heavy Vehicle Factory
18	GEAR	3901025014[39]	Heavy Vehicle Factory
19	GEAR	3901028039[39]	Heavy Vehicle Factory
20	STOPPER	3901051006[39]	Heavy Vehicle Factory
21	LEVER	3901061018[39]	Heavy Vehicle Factory
22	CLAMP	3901081045[39]	Heavy Vehicle Factory
23	FLANGE	3901218050[39]	Heavy Vehicle Factory
24	LOCK	3906102149[39]	Heavy Vehicle Factory
25	CAM	3906102294[39]	Heavy Vehicle Factory
26	BRACKET	3906102303[39]	Heavy Vehicle Factory
27	LEVER	3906102399[39]	Heavy Vehicle Factory
28	ROD	3906109061[39]	Heavy Vehicle Factory
29	HANDLE	3906109102[39]	Heavy Vehicle Factory
30	HANDLE	3906109113[39]	Heavy Vehicle Factory
31	HANDLE LOCK	3906110023[39]	Heavy Vehicle Factory
32	BUSHING	3906113046[39]	Heavy Vehicle Factory
33	FLANGE	3906113056[39]	Heavy Vehicle Factory
34	INSERT	3906201165[39]	Heavy Vehicle Factory
35	INNER DRUM	3906202040[39]	Heavy Vehicle Factory
36	BODY UPPER	3906202050[39]	Heavy Vehicle Factory
37	LEVER	3906203114[39]	Heavy Vehicle Factory
38	GUIDE	3906206041[39]	Heavy Vehicle Factory
39	BUSHING	3906206047[39]	Heavy Vehicle Factory

Sr No.	Product name	Nomenclature/Drawing No.	Factory Unit
40	BAR	3906206063[39]	Heavy Vehicle Factory
41	STAND FRONT	3906207072[39]	Heavy Vehicle Factory
42	CLUSTER GEAR	3906208026[39]	Heavy Vehicle Factory
43	SHAFT PINION	3906208037[39]	Heavy Vehicle Factory
44	BUSHING DRIVING	3906208038[39]	Heavy Vehicle Factory
45	GEAR	3906208046[39]	Heavy Vehicle Factory
46	CLUSTER GEAR	3906209070[39]	Heavy Vehicle Factory
47	TIE ROD	3906210067[39]	Heavy Vehicle Factory
48	WORM	3906210117[39]	Heavy Vehicle Factory
49	WORM	3906210119[39]	Heavy Vehicle Factory
50	CAM WHEEL	3906210124[39]	Heavy Vehicle Factory
51	SPROCKET	3906211060[39]	Heavy Vehicle Factory
52	GEAR	3906211061[39]	Heavy Vehicle Factory
53	LEVER	3906211088[39]	Heavy Vehicle Factory
54	CAM	3906211110[39]	Heavy Vehicle Factory
55	LEVER	3906211130[39]	Heavy Vehicle Factory
56	LEVER	3906211136[39]	Heavy Vehicle Factory
57	STOP	3906211157[39]	Heavy Vehicle Factory
58	STRIP	3906214040[39]	Heavy Vehicle Factory
59	STRIP	3906214076[39]	Heavy Vehicle Factory
60	BRACKET	3906214200[39]	Heavy Vehicle Factory
61	BRACKET	3906214203[39]	Heavy Vehicle Factory
62	BUSH	3906214211[39]	Heavy Vehicle Factory
63	FLANGE	3906305643[39]	Heavy Vehicle Factory
64	FLANGE	3906305911[39]	Heavy Vehicle Factory
65	SHAFT GEAR RH AND LH	3906401031[39]	Heavy Vehicle Factory
66	GEAR AXLE R H	3906401075[39]	Heavy Vehicle Factory
67	GEAR AXLE L H	3906401076[39]	Heavy Vehicle Factory
68	PLUG	3906401103[39]	Heavy Vehicle Factory
69	NUT	3906401138[39]	Heavy Vehicle Factory
70	BRACKET RH	3906401140[39]	Heavy Vehicle Factory
71	BRACKET LH	3906401141[39]	Heavy Vehicle Factory
72	GEAR LH	3906401203[39]	Heavy Vehicle Factory
73	BUSH	3906401206[39]	Heavy Vehicle Factory
74	SLINGER OIL	3906402031[39]	Heavy Vehicle Factory
75	COVER	3906402047[39]	Heavy Vehicle Factory
76	SLINGER OIL	3906402052[39]	Heavy Vehicle Factory
77	UNION PIPE	3906402054[39]	Heavy Vehicle Factory
78	SPIDER UNIVERSAL	3906402082[39]	Heavy Vehicle Factory

Sr No.	Product name	Nomenclature/Drawing No.	Factory Unit
79	LEVER	3906403026[39]	Heavy Vehicle Factory
80	OUTER CUP	3906403069[39]	Heavy Vehicle Factory
81	CONE FRONT	3906406029[39]	Heavy Vehicle Factory
82	CONE	3906406030[39]	Heavy Vehicle Factory
83	NUT	3906406042[39]	Heavy Vehicle Factory
84	NUT	3906406191[39]	Heavy Vehicle Factory
85	THRUST FLANGE	3906407034[39]	Heavy Vehicle Factory
86	GEAR OF DELIVERY PUMP	3906407035[39]	Heavy Vehicle Factory
87	GEAR DRIVE	3906407047[39]	Heavy Vehicle Factory
88	NUT	3906411072[39]	Heavy Vehicle Factory
89	BUSHING INNER	3906412022[39]	Heavy Vehicle Factory
90	BUSHING OUTER	3906412023[39]	Heavy Vehicle Factory
91	COVER	3906412042[39]	Heavy Vehicle Factory
92	BLOCK	3906412057[39]	Heavy Vehicle Factory
93	LIMITER	3906416041[39]	Heavy Vehicle Factory
94	STOP	3906416044[39]	Heavy Vehicle Factory
95	ROD	3906417046[39]	Heavy Vehicle Factory
96	LEVER	3906417064[39]	Heavy Vehicle Factory
97	LEVER	3906417065[39]	Heavy Vehicle Factory
98	LEVER	3906417070[39]	Heavy Vehicle Factory
99	FORK	3906417084[39]	Heavy Vehicle Factory
100	ROD	3906419063[39]	Heavy Vehicle Factory
101	FORK	3906419074[39]	Heavy Vehicle Factory
102	HUB	3906419094[39]	Heavy Vehicle Factory
103	FORK	3906419102[39]	Heavy Vehicle Factory
104	LEVER	3906419119[39]	Heavy Vehicle Factory
105	LEVER	3906419135[39]	Heavy Vehicle Factory
106	LEVER	3906419137[39]	Heavy Vehicle Factory
107	FORK	3906419141[39]	Heavy Vehicle Factory
108	SHAKLE	3906419152[39]	Heavy Vehicle Factory
109	FORK	3906419159[39]	Heavy Vehicle Factory
110	CLAMP	3906419167[39]	Heavy Vehicle Factory
111	FORK	3906419173[39]	Heavy Vehicle Factory
112	LEVER	3906419179[39]	Heavy Vehicle Factory
113	FORK	3906419180[39]	Heavy Vehicle Factory
114	LATCH	3906419195[39]	Heavy Vehicle Factory
115	GUIDE	3906419201[39]	Heavy Vehicle Factory
116	CARRIER	3906419302[39]	Heavy Vehicle Factory
117	LEVER	3906420031[39]	Heavy Vehicle Factory

Sr No.	Product name	Nomenclature/Drawing No.	Factory Unit
118	GUIDE	3906420037[39]	Heavy Vehicle Factory
119	FORK	3906420052[39]	Heavy Vehicle Factory
120	LEVER	3906420058[39]	Heavy Vehicle Factory
121	YOKE	3906420065[39]	Heavy Vehicle Factory
122	GUIDE	3906420118[39]	Heavy Vehicle Factory
123	SHAFT GEAR	3906609042[39]	Heavy Vehicle Factory
124	UPPER BRACKET	3906609141[39]	Heavy Vehicle Factory
125	CARRIAGE	3906609286[39]	Heavy Vehicle Factory
126	PLATE COVER	3906801306[39]	Heavy Vehicle Factory
127	CATCH	3906801366[39]	Heavy Vehicle Factory
128	FLANGE	3906804192[39]	Heavy Vehicle Factory
129	PINION SHAFT	3906851109[39]	Heavy Vehicle Factory
130	BUSHING	3906861049[39]	Heavy Vehicle Factory
131	THRUST RING	3906861050[39]	Heavy Vehicle Factory
132	GEAR	3906890059[39]	Heavy Vehicle Factory
133	SHAFT	3909849374[39]	Heavy Vehicle Factory
134	HOUSING OIL SEAL	3909849388[39]	Heavy Vehicle Factory
135	END COVER	3909849396[39]	Heavy Vehicle Factory
136	PLUG	3996412035[39]	Heavy Vehicle Factory
137	BOSS	3996804112[39]	Heavy Vehicle Factory
138	SUPPORT STEEL 15 OPEN HEARTH	3996201128[39]	Heavy Vehicle Factory
139	HANDLE	3996211160[39]	Heavy Vehicle Factory
140	KEY	3996211167[39]	Heavy Vehicle Factory
141	PLUG	3996408020[39]	Heavy Vehicle Factory
142	LEVER R H	3996419162[39]	Heavy Vehicle Factory
143	RH EYE FORGING	3901010090[39]	Heavy Vehicle Factory
144	LH EYE FORGING	3901010092[39]	Heavy Vehicle Factory
145	FLANGE FORGING	3901023040[39]	Heavy Vehicle Factory
146	RELEASE RING FORGING	3901040031[39]	Heavy Vehicle Factory
147	PLANET PINION Z 15	3901040045[39]	Heavy Vehicle Factory
148	PLANET PINION Z 18	3901040046[39]	Heavy Vehicle Factory
149	GEAR	3906202022[39]	Heavy Vehicle Factory
150	BRACKET	3906214199[39]	Heavy Vehicle Factory
151	PINION PLANET	3906401033[39]	Heavy Vehicle Factory
152	BUSHING	3906401037[39]	Heavy Vehicle Factory
153	RELEASE RING III FRICTION CLUTCH	3906401065[39]	Heavy Vehicle Factory
154	CHEEK	3906401073[39]	Heavy Vehicle Factory
155	WHEEL GEAR L H	3906401105[39]	Heavy Vehicle Factory
156	PLANET PINION	3906401164[39]	Heavy Vehicle Factory

Sr No.	Product name	Nomenclature/Drawing No.	Factory Unit
157	PLANET IV TRAIN	3906401166[39]	Heavy Vehicle Factory
158	DISC THRUST	3906401197[39]	Heavy Vehicle Factory
159	BUSH BEARING	3906401202[39]	Heavy Vehicle Factory
160	FLANGE DRIVING	3906402053[39]	Heavy Vehicle Factory
161	COUPLING	3906402060[39]	Heavy Vehicle Factory
162	FLANGE DRIVEN	3906402064[39]	Heavy Vehicle Factory
163	YOKE REDUCTION GEAR UNIT TO	3906402065[39]	Heavy Vehicle Factory
164	COUPLING	3906402066[39]	Heavy Vehicle Factory
165	CAP FILLER	3906402076[39]	Heavy Vehicle Factory
166	GEAR BEVEL DRIVEN	3906402078[39]	Heavy Vehicle Factory
167	COUPLING DRIVING	3906406228[39]	Heavy Vehicle Factory
168	COUPLING TOOTHED	3906406228[39]	Heavy Vehicle Factory
169	RING LABYRINTH	3906406229[39]	Heavy Vehicle Factory
170	RING	3906411026[39]	Heavy Vehicle Factory
171	RACE BEARING	3906411032[39]	Heavy Vehicle Factory
172	SCREW	3906416020[39]	Heavy Vehicle Factory
173	FLANGE DRAIN HOLE	3906802077[39]	Heavy Vehicle Factory
174	STAND	3906851034[39]	Heavy Vehicle Factory
175	ADAPTOR	3909849066[39]	Heavy Vehicle Factory
176	GEAR SPL 1	3909849380[39]	Heavy Vehicle Factory
177	GEAR SPL 1	3909849402[39]	Heavy Vehicle Factory
178	GEAR SPL 2	3909849406[39]	Heavy Vehicle Factory
179	COVER	3996406044[39]	Heavy Vehicle Factory
180	GEAR RING CARRIER FOR PROJECT DHANUSH	[71] 7110302036, P155 HRG 3014 3	Machine Tool Proto Type Factory
181	PIN FOR PROJECT DHANUSH	[71] 7110302035, P155 HRG 3012 3	Machine Tool Proto Type Factory
182	GEAR RING FOR PROJECT DHANUSH	[71] 7110302032, P155 HRG 3011 3	Machine Tool Proto Type Factory
183	SUN GEAR FOR PROJECT DHANUSH	[71] 7110302033, P155 HRG 3001 3	Machine Tool Proto Type Factory
184	CRANK SHAFT (FULLY FINISHED)	DRG.NO.3305-06-15	Engine Factory Avadi

PRODUCT DESCRIPTION:



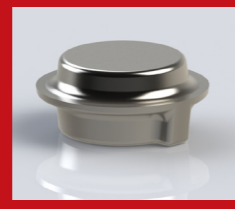
Crank Shaft



Breach Base



Road Wheel Arm



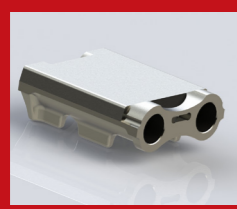
Flange



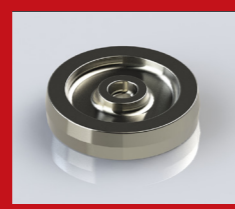
Crank 690



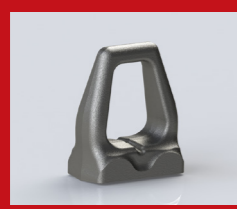
Hub Carrier



Track Link



Intermediate Gear



Track Guide



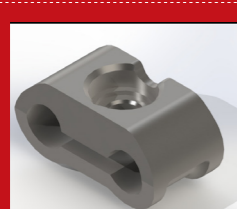
Sun Gear



Shoe



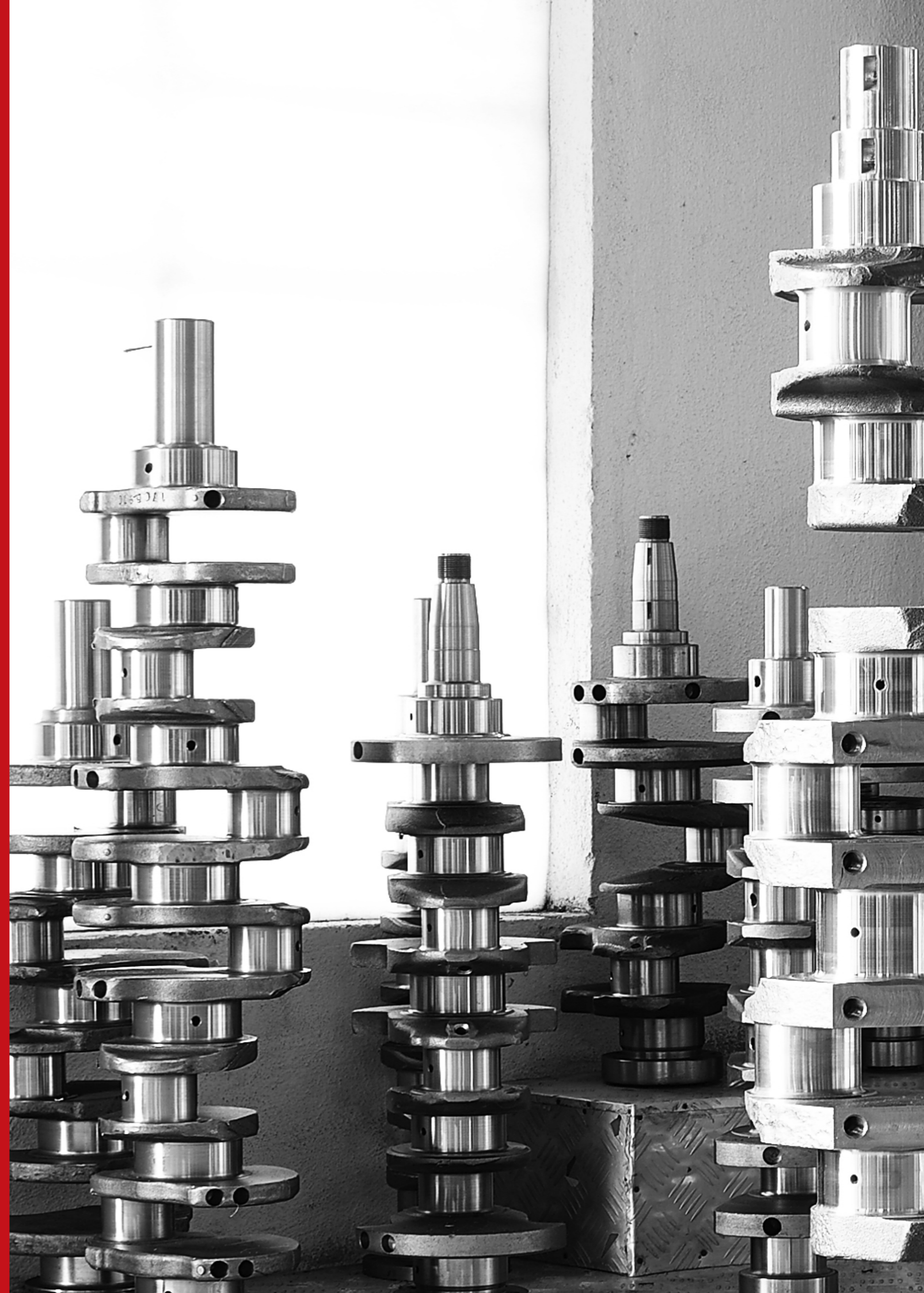
Gear Ring (Solid)



Clamp



Gear Ring (Hollow)



WWW. BALUINDUSTRIES.COM

BALU FORGE INDUSTRIES LTD (BFIL)

Corporate Office :

506, Imperial Palace, 45, Telly Park Road,
Andheri East, Mumbai-400 069, Maharashtra

India. Phone: +91-22-26839916

Fax: 91-22-26842860

E-mail: sales@baluindustries.com,
info@baluindustries.com

Regional Office 1 :

Turkey - Will be commissioned Q3 2022

Regional Office 2 :

United States - Will be commissioned Q3 2023

Plant Address Unit 1 :

43-8, Kakti Industrial Area, Kakti,
Belgaum-591113, Karnataka, India.

Plant Address Unit 2 :

44-A, Kakti Industrial Area, Kakti,
Belgaum-591113, Karnataka, India.

Plant Address Unit 3 :

Shah & Mehta Ind. Estate, Plot No. 28,29, Village
Ghonsai, Tai. Wada, Dist. Palghar, Pin-421312

Plant Address Unit 4 :

S21-11, Al-Hulaila Industrial Zone-FZ, Ras Al
Khaimah Economic Zone, Ras Al Khaimah,
United Arab Emirates



COMPANY WEBSITE



COMPANY MOVIE

